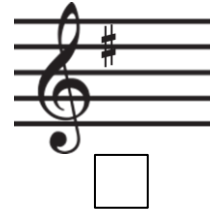
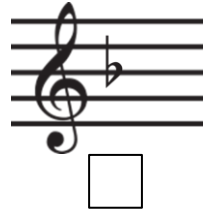
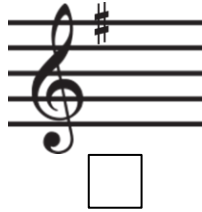
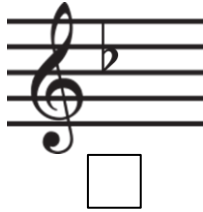


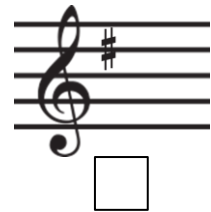
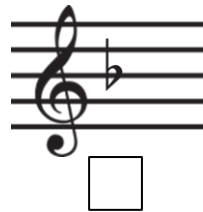
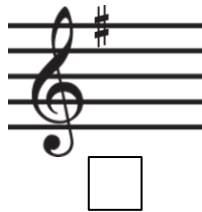
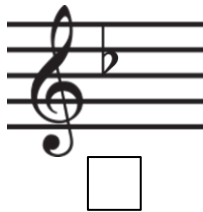
Major Key Signatures

Theory in Practise Test (Grade 1)

1. Tick (✓) **one** box to show the correctly written key signature of F major.



2. Tick (✓) **one** box to show the correctly written key signature of G major.



3. Circle **TRUE** or **FALSE** for each statement.

- | | | |
|--|-------------|--------------|
| (a) There are no sharps in the key signature of C major | TRUE | FALSE |
| (b) There is one sharp in the key signature of F major | TRUE | FALSE |
| (c) There are no flats in the key signature of G major | TRUE | FALSE |
| (d) There are two sharps in the key signature of D major | TRUE | FALSE |

4. Tick (✓) **one** box to indicate which major scale each key signature belongs to.



- C Major
 F Major
 D Major
 G Major



- C Major
 F Major
 D Major
 G Major



- C Major
 F Major
 D Major
 G Major



- C Major
 F Major
 D Major
 G Major